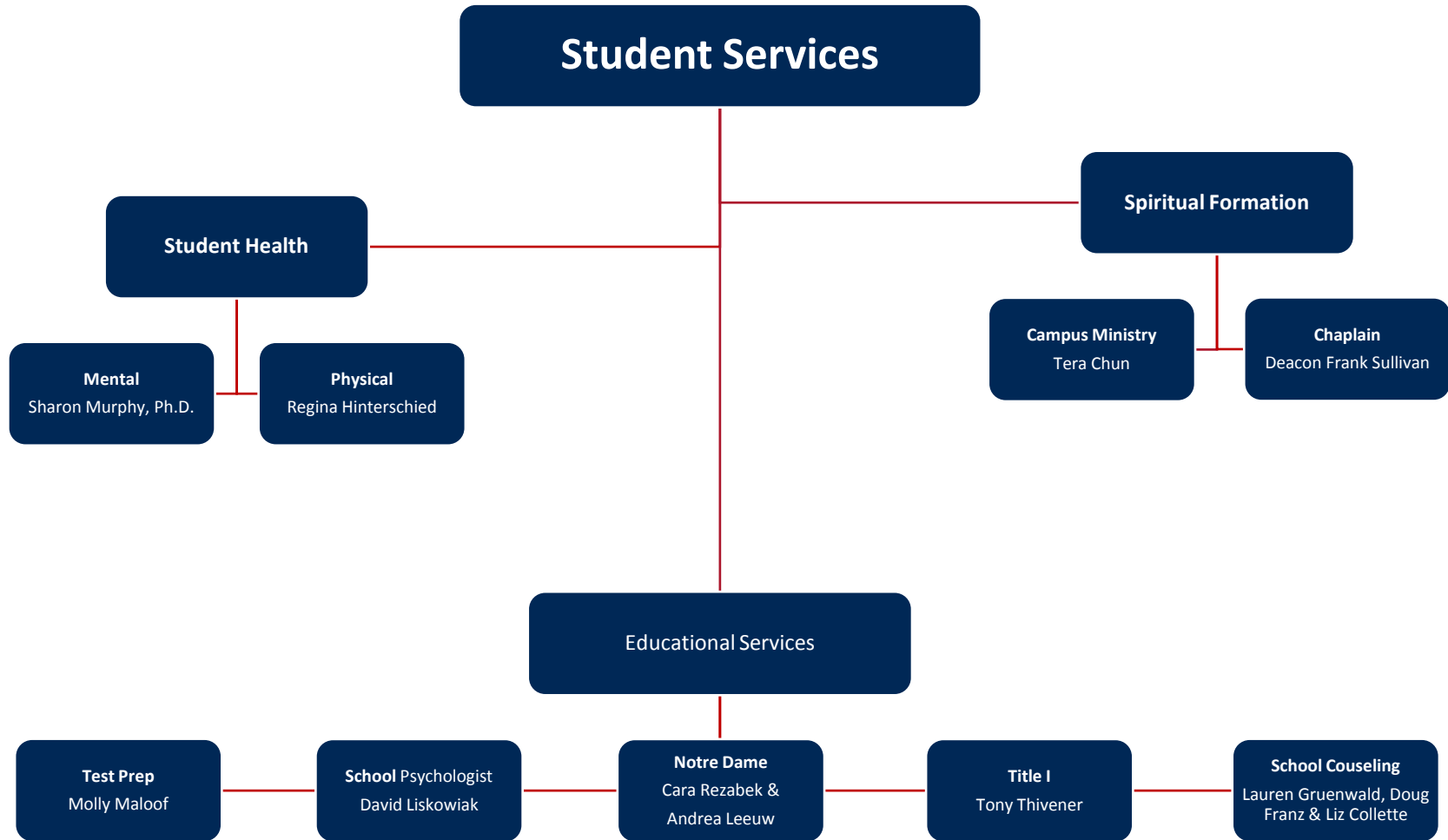


BISHOP HARTLEY



Student Health

```
graph TD; A[Student Health] --- B[Mental]; A --- C[Physical];
```

Mental

Sharon Murphy, Ph.D. Clinical Psychologist

- provides mental health services for students facing emotional and behavioral difficulties

Physical

Regina Hinterschied, School Nurse

- identifies and treats health issues among students
- provides instruction in the maintenance of good health and disease prevention
- evaluates physical conditions of students and refers students to appropriate resources
- works in conjunction with the school counseling office and administration

Spiritual Formation

```
graph TD; A[Spiritual Formation] --- B[Campus Ministry]; A --- C[Chaplain];
```

Campus Ministry

Tera Chun, Campus Minister

- provides the school community with opportunities for worship, service, and retreats in conjunction with the School Chaplain, and teacher and student leaders in order to fulfill our mission as a Catholic school

Chaplain

Deacon Frank Sullivan, School Chaplain

- provides an ordained presence in our building
- strives to enable students and staff to develop spiritually and to achieve the Catholic mission of the school
- works with the Campus Minister and arranges for school prayer, prayer services, sacraments, and outreach to our community and Diocese

Educational Services

Notre Dame Program

Cara Rezabek &
Andrea Leeuw

- work with students on Service Plans, Academic Support Plans, & Medical Plans

- these students receive accommodations inside and outside of the classroom

*these students have a diagnosed disability

School Psychologist

David Liskowiak

- conducts psycho-educational testing to determine if student qualifies as having an educational disability

- provides group and individual counseling to students experiencing academic/organizational struggles, and social/emotional issues short of suspected or diagnosed mental health conditions

Test Preparation

Molly Maloof

- organizes and teaches standardized test preparation courses for interested and/or identified students

School Counselors

Doug Franz (A-G), Lauren Gruenwald (H-N), & Liz Collette (O-Z)

- assist students with academic, career, social, and emotional concerns using a comprehensive education approach

Title I Tutor

Tony Thivener

- works with general education students who qualify for Title I tutoring

*these students must have a C or below in Math or Reading to qualify